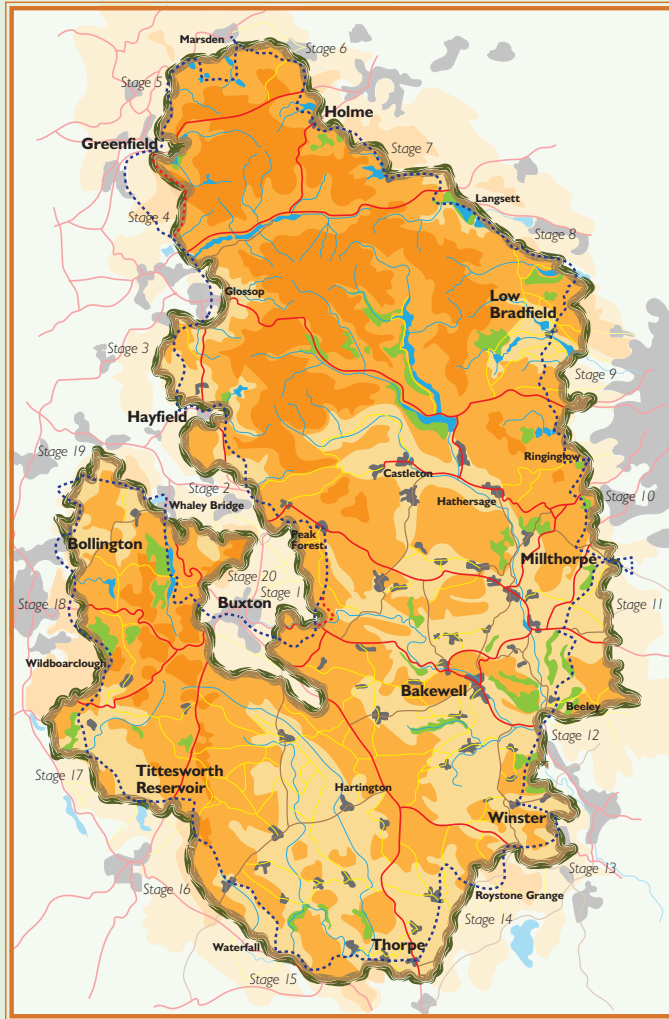


# Peak District Boundary Walk



200 miles around the edge of the national park



## Stage 9

## Low Bradfield to Ringinglow

**1** From Low Bradfield Post Office walk downhill with the cricket ground on the right. Where the road swings right take the road left (Lamb Hill), and then a footpath on the right to cross a bridge. Go left on a path to Damflask Reservoir. After 700m go right, uphill inside the edge of woodland to a road. Turn right and after 200 metres take the byway opposite (signposted Bramble Wood Cottages) which becomes a grassy path and leads to a road junction at the top of Mill Lee Road.

**2** Follow the road, signposted Ughill and Strines, rising gently uphill. As you reach the crest of the slope, take the road off left (Ughill Road) and follow it past Upper House on the left to a T-junction.

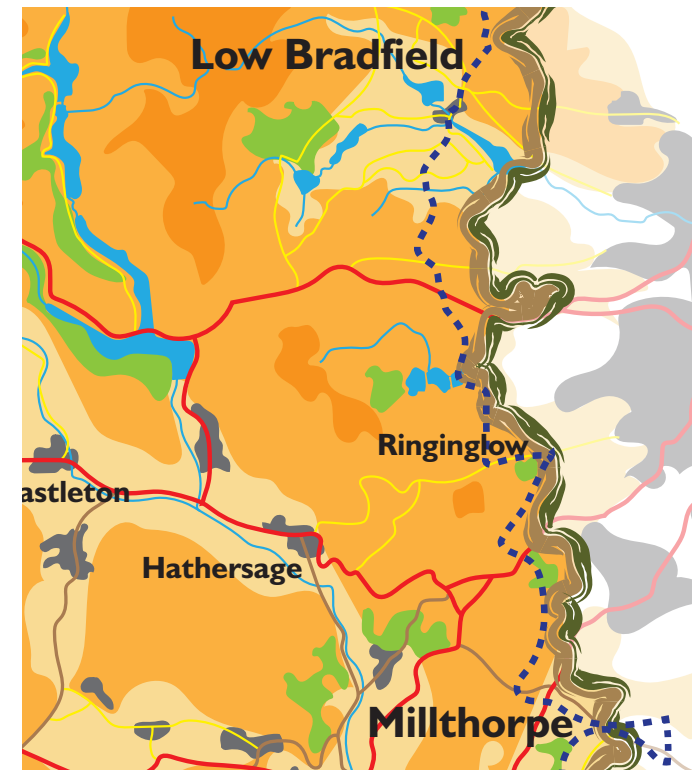
**3** Turn left and go downhill following Tinker Bottom then Corker Lane (signposted Dungworth and Sheffield), soon crossing two streams. Ignore the footpath on the right and at a sharp left bend go right on a footpath immediately before the second bridge. Cross the field close to the fence on the left and through a metal kissing gate. Continue on the footpath, making for a ladder stile into a plantation, where the path goes left. Turn left where the footpath joins a farm track, and bear left just before the house, taking a path across the field to a farm track. Turn left on the track and follow it until you meet a road, with Crawshaw Lodge on the right.

**4** Turn right, then left across a broad verge to a footpath sign and stile. Take the path downhill to the main road (A57). Turn right and then cross with care to the footpath going over a stile and down a field (veering slightly away from a wall on the right) to a footbridge over Hollow Meadows Brook. Immediately before the bridge, take the footpath on the left (signposted Rivelin Dams) alongside the river to an unsurfaced road at a stone bridge. Turn right for about 1 km (ignoring footpaths on the right) until you reach a large retaining wall, and go left at a fork in the road.

**5** Take the road to Rivelin Dams down to a grassy area on the left. Turn right on a path (before the road crosses the stream) and follow the path up steps and through woods, crossing footbridges to an open area with stepping stones on the right. Ignore the stepping stones and take the footpath left (signposted Redmires Road) uphill to a road. Turn left to Soughley Lane.

**6** Turn right along the lane and where it bends sharp left take the path to the right. Approaching a metal gate take the path branching left and follow it uphill with a wall on the left. The path broadens and levels out. Just before a metal gate cross a stile to the right and follow footpath signs (via a quarry) to a sunken track. Continue along track to reach Fulwood Head Road.

**7** Turn right on Fulwood Head Road and follow this round a bend to the left. Turn right on a footpath through stone gateposts up the drive to Brown Edge Farm. Beyond the farmyard go ahead through the middle gate and along a walled lane to another metal gate. Cross a stile and take the left of two paths, around the foot of a heathery bank, then up through a gap in the bank for a path to Ringinglow Road. Turn left to finish at the Norfolk Arms pub at Ringinglow.



**Start:** Low Bradfield (GR SK 263920)

**Finish:** Ringinglow (GR SK 291837)

**OS map:** Explorer OL 1 Peak District – Dark Peak Area

**Distance:** 9 miles/14.5km **Ascent:** 1,508ft/460m

[www.friendsofthepeak.org.uk/boundary-walk](http://www.friendsofthepeak.org.uk/boundary-walk)