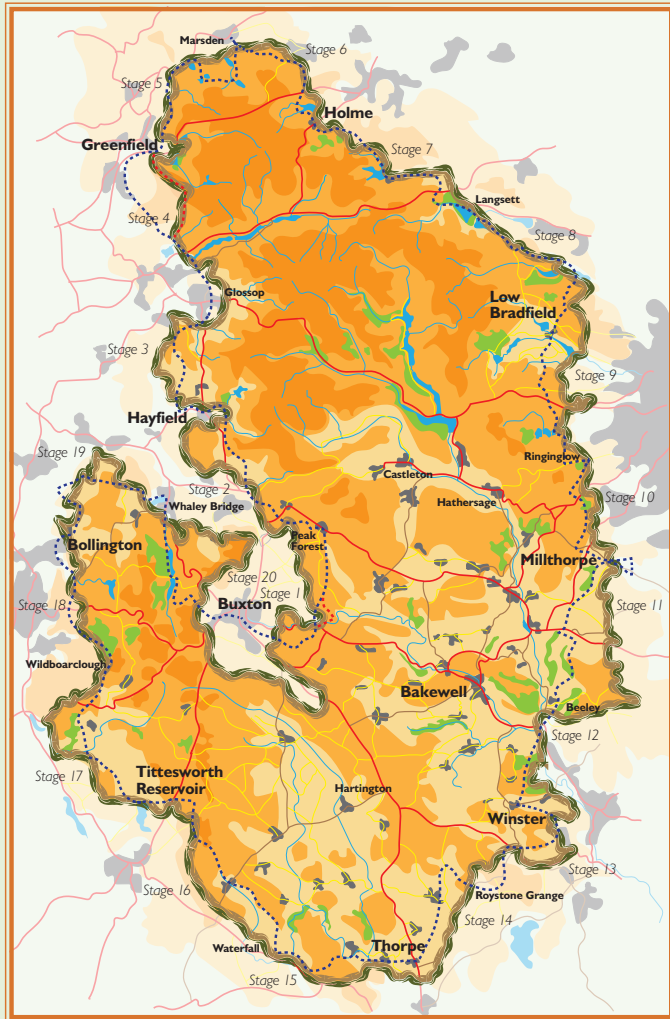


# Peak District Boundary Walk



200 miles around the edge of the national park



## Stage 7

## Holme to Langsett

**1** From the bus terminus in the centre of Holme walk through the hamlet, with The Fleece Inn on your left. Just past Holme Castle turn right for the signposted Kirklees Way (KW) down through sloping fields. Cross the Brownhill Reservoir feed via a footbridge, then climb up to overlook Brownhill Reservoir and cross the dam between this and the adjoining Ramsden Reservoir.

**2** At the road, turn right and just before the car park continue to follow the KW left, up the hill, alongside a wood. At a bridleyway junction (with the KW continuing right) take the Holme Valley Circular (HVC) path ahead up the hill. Shortly, at a point just past the path down to the left, and turning slightly back on yourself, continue right along a well defined path up Crow Hill. This soon re-joins the KW, becoming a rocky road/bridleway called Ramsden Road.

**3** At the main road bear left, now off the road and down a rougher route, continuing along the KW until a junction with the HVC, where both turn right continuing past farm buildings and into the conifer plantation. Here the KW continues ahead. Take the first forest road track to the right (the HVC) and follow this clearly defined route that snakes over Reynard Clough. Go past more buildings and eventually emerge at the end of the plantation on to Linshaws Road.

**4** Turn left and follow the road around the edge and to the end of the conifer plantation. At the end, just after a private road to the right, follow a bridleway on the right to the road at Harden (this track can be boggy and splits into many routes - keep to the left of the tip of Harden Reservoir and head towards the houses).

**5** Continue along the road beside Winscar Reservoir, turning right down to the reservoir car park. Walk through the car park to the far end for a track to the dam overlooking Dunford Bridge.

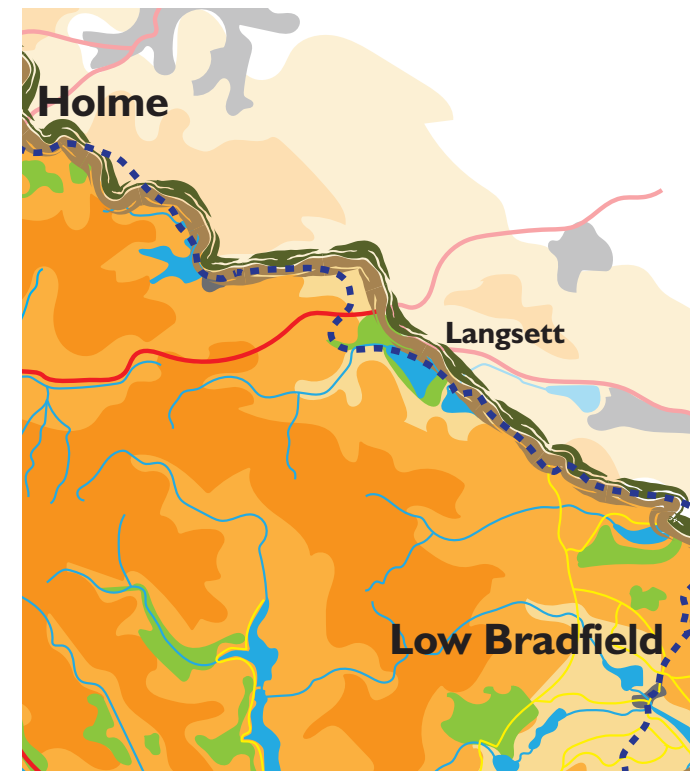
**6** Go across the dam and at the end immediately turn sharp left and drop down along the path between the conifer plantation and the dam wall, to arrive in Dunford Bridge.

**7** Follow the popular Trans Pennine Trail towards Hazlehead. At Cote Bank Bridge take the path up the embankment on the left and to the bridge.

**8** Follow the track across the bridge and over the trail, bending to the left and then through a gate. Follow the path with the wall on your left.

**9** The path becomes surfaced as it approaches the houses ahead. At the old Manchester road go right to cross the (new) A628 Woodhead Road (take care - fast traffic) and then ahead, following the signposted footpath straight through the conifer plantation.

**10** The path drops down over a stream and at the wall ahead take a left turn to pick up the Barnsley Boundary Walk (BBW), avoiding the immediate footpath on your right. Follow this along the side of the plantation and then into it. At the junction slightly turn back on yourself to continue along the undulating BBW, then turn sharply right on meeting a second track before the tip of Langsett Reservoir. Continue left on the well-used BBW trail through the plantation along the side of the reservoir to emerge towards the dam end of the reservoir at Langsett.



**Start:** Holme (GR SE 107058)

**Finish:** Langsett (GR SE 211004)

**OS map:** Explorer OL 1 Peak District – Dark Peak Area

**Distance:** 10.5 miles/16.9km **Ascent:** 852ft/260m

[www.friendsofthepeak.org.uk/boundary-walk](http://www.friendsofthepeak.org.uk/boundary-walk)