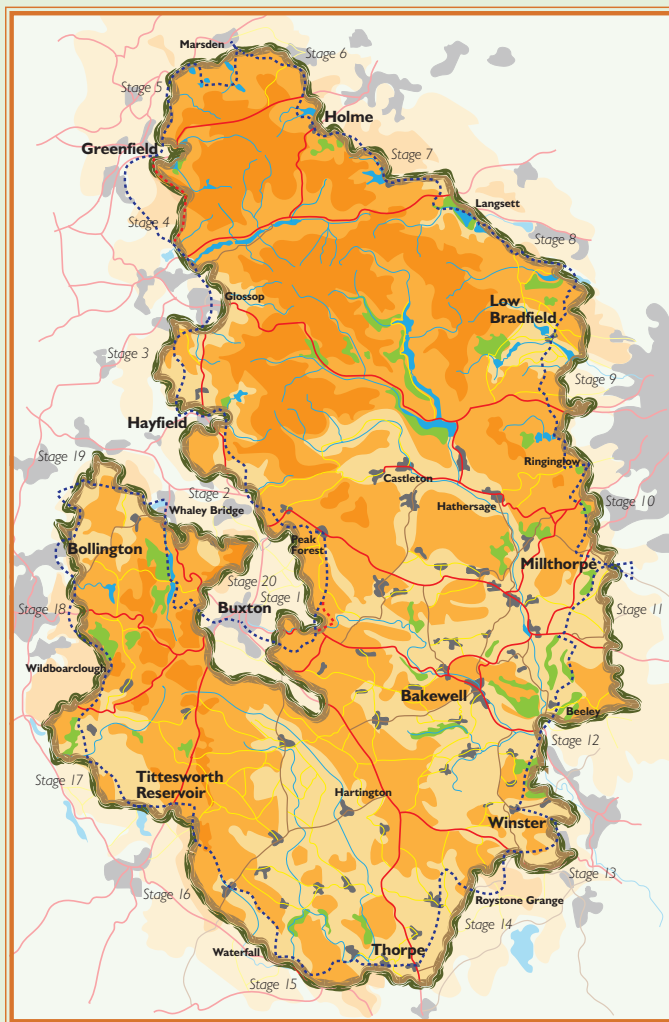


Peak District Boundary Walk



200 miles around the edge of the national park



Stage 6

Marsden to Holme

1 From the Riverhead Brewery Tap, walk along Argyle Street with the river on your right. Bear left under the tunnel and come out at Marsden football club and bear right. Cross the mini roundabout and go uphill for approximately 1 km. When you see the reservoir on the right, take the narrow walled footpath on the left. Go round a house and cross a farm track, up to a lane. Go left uphill, through the National Trust gate and up to the drainage ditch. Turn left and head towards a solitary house on the brow of the hill ahead.

2 Once at the end of the conduit, continue past a house and join the tarmac lane that borders Deer Hill Reservoir, with great views towards Huddersfield and Leeds.

3 Three quarters of the way along this straight lane take steps down the bank on your left as far as the sluice gate that runs alongside, and where a metal handrail on your right comes to an end. Back track around the end of the handrail by way of a tiny earth path leading up a very short bank, which then almost immediately joins a wide flat track. Continue ahead on this track towards a small area enclosed by high green-wire security fencing. Walk alongside the fencing to a stone wall and take the step stile over it. Continue on the wide track straight ahead as it crosses two large fields alongside the left hand boundary, with the village of Meltham in front of you. Exit through the gate ahead, then turn left.

4 Almost immediately take the bridleway on your right. Follow it to the end, keeping to the left edge of the large fields. At the end, turn left onto an unmade road. Proceed along this road until passing a farmhouse on your left, then take the lane on your right. Follow the lane across two junctions and on to an unmade road marked as a public footpath.

5 Shortly after ascending over the brow of the hill as the track bends right, turn sharp left and follow along the steep Royd Edge. The track becomes a tarmac lane and when you reach the first property on your right, turn sharp right immediately afterwards into Hebble Lane. The facilities of Meltham village centre are just a short walk ahead at this point.

6 Follow the lane down to where it ends in a parking bay. Leave by the metal swing gate straight ahead, and on to a narrow path. Where the low wall on your left finishes turn left along another narrow path and follow it straight on as it crosses over a lively brook by way of a concrete bridge. Follow the path uphill and into a wooded area, where it swings to the left and widens. Follow it out of the woods by way of a much narrower and uneven path.

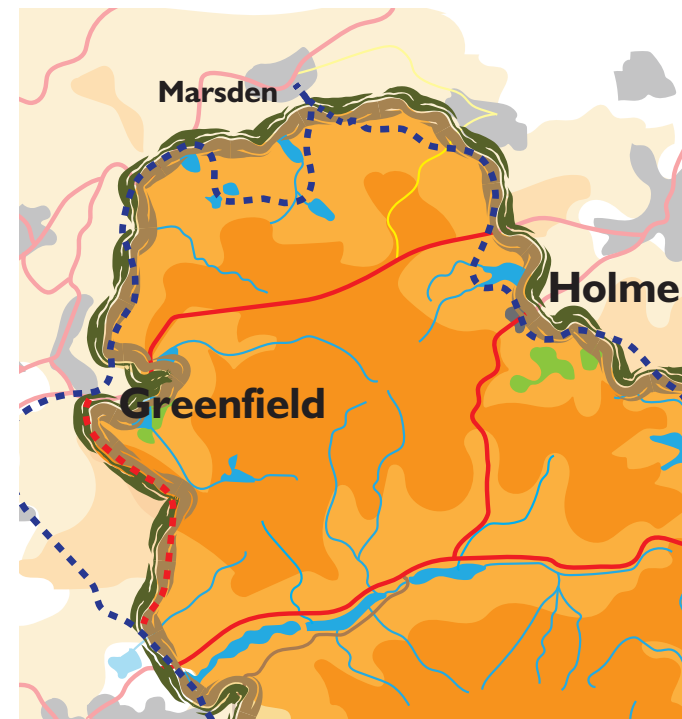
7 When approaching a metal gate ahead, swing right before reaching it, to walk along a driveway of a property to the end, then turn right onto a tarmac lane. Follow the lane uphill until the lane forks and take the left branch onto an unmade road. As the ascent evens out, merge left on to a drive and proceed to the A635 Holmfirth Road.

8 Cross this main road with care for the lane opposite. Over the brow of the hill, at a sharp left bend, take the track on your right via a stile. Follow it downhill until before a private property turn left into a wide recess in the wall, and through a smaller gate on to a grass track. Follow this downhill until it meets with another, crossing it for another almost opposite (to your right) which leads down to Bilberry Reservoir.

9 Cross the dam between Bilberry and Digley Reservoirs and follow the path around to your left, crossing diagonally through a field to exit in the top corner. At the end of the next field cross a stream/ditch and,

immediately afterwards, branch away from this path and walk diagonally up the hill on a faint grass path towards a stone wall.

10 Go through the wall gap and on through fields. It becomes a walled path and leads into the village of Holme. At the end turn left into a lane, then turn right into the centre.



Start: Marsden (GR SE 049 1 16)

Finish: Holme (GR SE 107058)

OS map: Explorer OL 1 Peak District – Dark Peak Area & OL 21 South Pennines

Distance: 8.5 miles/13.7km **Ascent:** 1,523ft/464m

www.friendsofthepeak.org.uk/boundary-walk