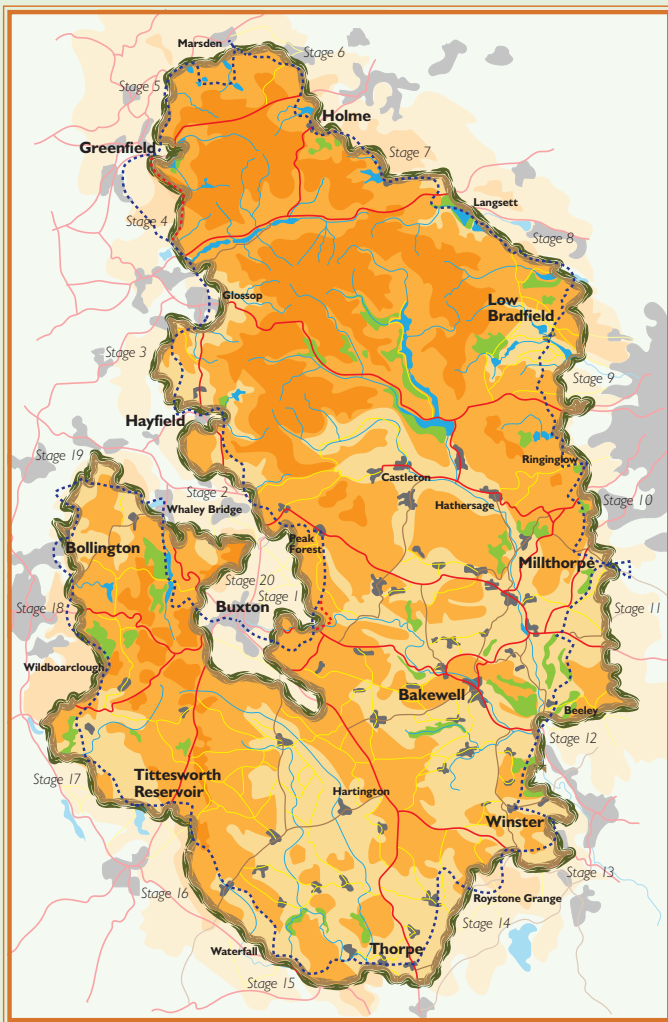


# Peak District Boundary Walk



200 miles around the edge of the national park



## Stage 5 Greenfield (Dovestone Reservoir) to Marsden

**1** Walk out of Dovestone car park along the road until it meets the main road. Then go downhill and take the first lane (Hollins Lane) on your right. Follow the road around a wide right hand bend, to where it veers left and a driveway joins to your right.

**2** Take the grass footpath just inside the driveway uphill, through two fields. Where it meets a driveway track to some properties on your left, continue straight over on a path that continues uphill. The path then meets another track going across it. Cross this track and bear left onto a second path (the Oldham Way). Follow this track uphill to the obelisk (war memorial) near the hilltop outcrop known as Pots and Pans.

**3** Behind the obelisk follow a path that leads over the remains of a wall. Turn left at the end of this short path and progress uphill to a gate and stile in the corner of the fencing, and cross the stile. Follow the well-established path in front of you go, up onto a higher ridge and then turn sharp left to follow the path up to an outcrop of rock (Shaw Rocks) and continue onwards.

**4** Continue along this path with wire fencing on your right, and eventually you will see a stone wall on your left. Continue onward to a break in the stone wall where a walled path emerges. Ignoring the tempting stile and public footpath sign at the bend in the road, take the enclosed track on the left and follow it for 800m down to the road at Pobgreen. Turn right into the road and continue uphill until the road ahead turns into a track and a lane leads away to your left. Take the lane to your left.

**5** Follow the lane downhill and, once rounding a slight left bend, you should see the public footpath fingerpost on the right hand side of the lane, at the edge of a property. Turn left down the narrow path at the fingerpost to a small fenced area. Leave on the far left, then go immediately right and traverse the field with the field boundary wall on your right. At a stile at the far end switch to the other side of the wall and eventually enter a large expanse of land. Follow the track straight ahead then along a ridge to meet a gate at the far end.

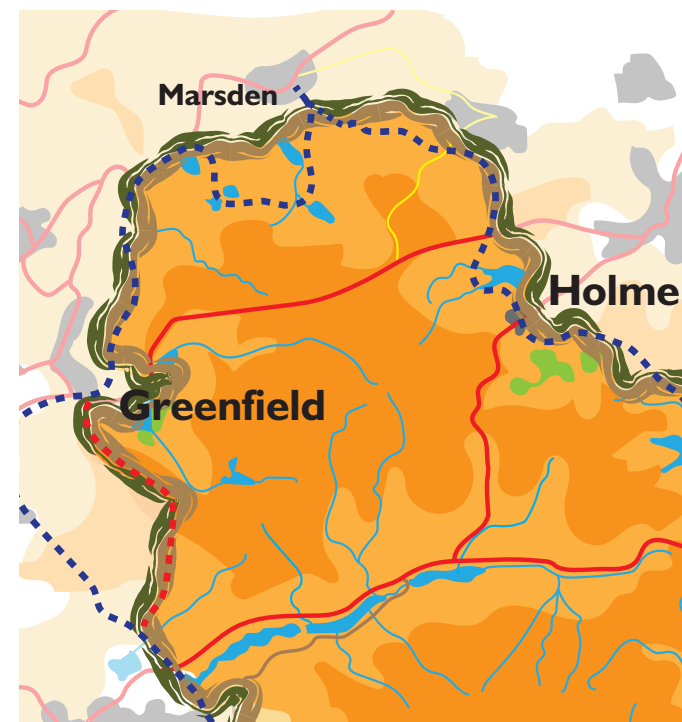
**6** Turn left into lane beyond, and once over a bridge take the first right into the lane. Where it turns sharply right take a grass track ahead until a gate at the far end. Go through the gate and bear left to follow an indistinct path along the left boundary to a gate, then via a short track and the front of a property to the road and an elevated gate on your right, with a fingerpost directing to the Pennine Bridleway.

**7** Follow the rugged track uphill to Brun Clough Reservoir car park. Take the Pennine Way on the far side of the car park onto Marsden Moor (and from Greater Manchester into West Yorkshire). With Redbrook Reservoir to the left, branch right at a large upright boundary stone. Approaching the next reservoir (Black Moss), go left at the path junction, through an open gateway and down between reservoirs. It continues across an open moor and via Blakely Clough to eventually reach a raised stone platform with a small mast on top.

**8** Follow the Pennine Way down the steep path to cross a stream via a plank bridge, then up to a firm track. Turn right and follow this as far as the dam of Wessenden Reservoir.

**9** Take a grass path, leftwards, behind the back wall of Wessenden Lodge. Almost immediately turn right (back on yourself) up a track parallel to the Pennine Way until you reach the main path along the edge.

**10** Turn left on the path (a designated heritage trail) and alongside a drainage ditch with a raised bank. At the National Trust 'Binn Moor' sign, where the path goes sharp right, take the path to the left down past a house to a lane. Take the second footpath signposted 'Colne Valley Circular Route' down narrow grassy steps, across a farm track, through a gate and down a walled path to the road. Turn right and go straight across at a mini roundabout on to Fall Lane past Marsden football club. Then take the left fork under the bridge, then immediately right alongside the stream to the Riverhead Brewery Tap.



**Start:** Greenfield (Dovestone Reservoir)  
(GR SE 013034)

**Finish:** Marsden (GR SE 049116)

**OS map:** Explorer OL 1 Peak District – Dark Peak Area & OL 21 South Pennines

**Distance:** 11 miles/17.7km **Ascent:** 2,520ft/768m

[www.friendsofthepeak.org.uk/boundary-walk](http://www.friendsofthepeak.org.uk/boundary-walk)