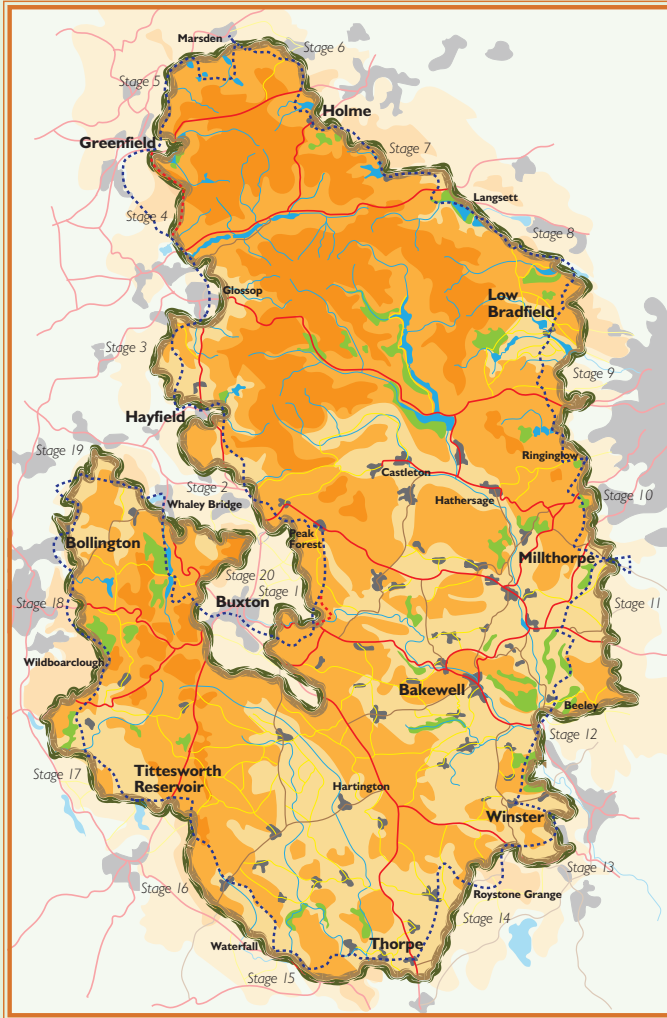


# Peak District Boundary Walk



200 miles around the edge of the national park



Stage 18

## Wildboarclough to Bollington

**1** Keep the Crag Inn to your left and continue on the unclassified tarmac road for 100m, then bear left onto a steep surfaced track and follow it over a cattle grid. Follow the sign to the left of Shuttingsloe Farm. (Be sure to look at the crafted bracelets made by the children of the farm, for sale at the pathway honesty box!) Follow the path to the summit of Shuttingsloe. Continue up this prominent path to the trig point and toposcope on the slight ridge.

**2** With Macclesfield Forest visible to the north, descend a very steep stone flagged path which gradually flattens out. Turn left through the metal kissing gate and head for Macclesfield Forest.

**3** Entering the forest, locate the green information post signposted Langley and continue downhill following signs for Trentabank along a gravel footpath until you reach Trentabank Reservoir car park and Ranger centre in the middle of Macclesfield Forest.

**4** From the ranger centre turn left along the road for 200m, then go straight across the road through a gap in the wall and turn left along the path on the other side of the wall, which then leads all the way to Leathers Smithy inn at Langley on the far side. Turn left at the inn and go down Clarke Lane, with Bottoms Reservoir on the right.

**5** Before the end of Bottoms Reservoir branch right at the sign for the Gritstone Trail (indicated by a black footprint symbol with a letter 'G' on the sole) on to a gravel path which runs parallel to the road. Swing right along the dam wall, over a footbridge and up some steps, emerging at the smaller Teggsnose Reservoir.

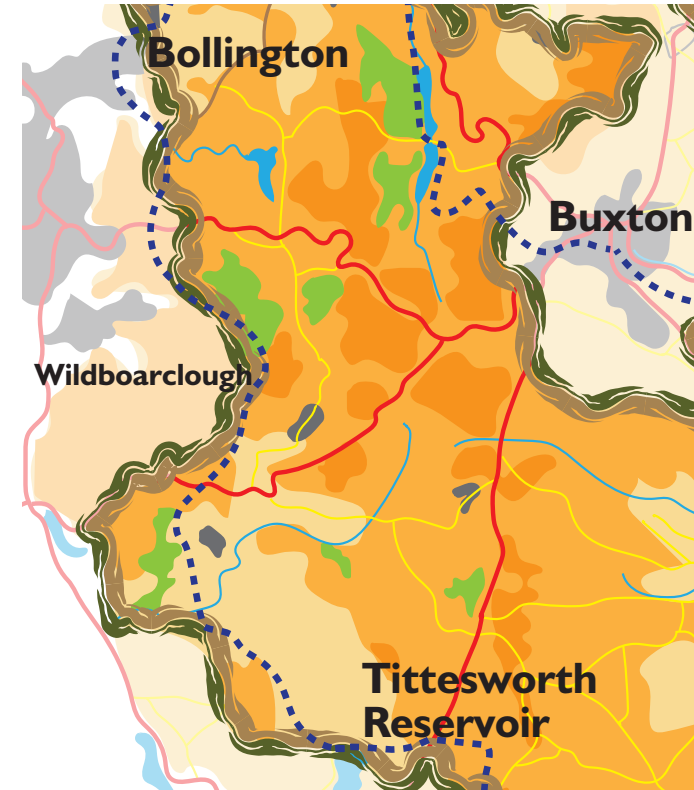
**6** Go straight ahead again along the dam wall and at the north west tip of this reservoir, bear left on the steeply stepped Gritstone Trail and past the sign indicating the boundary of Tegg's Nose Country Park. Continue uphill on the main path (ignore paths leading off) until you enter a small flat grassy meadow. Head up slightly right and through a small gate. Turn right here onto a flat gravel track contouring Tegg's Nose among patches of heather, and past some old quarry machinery. Continue through a gate, then bear right at a fork down stone steps with a handrail to a metal gate. Turn right onto a wide track to reach the visitor centre, café and car park.

**7** Go out of the visitor centre and turn right along the road, then after 130m go left at the turning and then almost immediately go right into a field, following the Gritstone Trail across hilltop fields. Cross the A537 ('Cat and Fiddle' road) with care, turn left along the pavement and at the T-junction, pick up the Gritstone Trail again and stay on it until you reach the B5470 at Tower Hill Folly in Rainow village.

**8** Cross the B5470 and turn left; then after 100m turn right on the Gritstone Trail. Go through a gate downhill, then curve right along a wooded gully. At the end of the wood turn half left, steeply uphill, through meadows and gates until the path levels out on the ridge known as the Saddle of Kerridge. Bear right at a multiple finger post on the Gritstone Trail, all the way along to the small tower known as White Nancy (see next stage for some background to this curiosity).

**9** Continue beyond White Nancy, steeply downhill on a stone-stepped path. When you reach a crossing track leave the Gritstone Trail and go straight over on the signposted footpath. Go through a kissing gate steeply downhill on a grass field track, through two more metal gates

onto a stone-stepped path and through the next field to Bollington, emerging on Lord Street. Turn left, continue for 70m, then turn right into High Street. Head down this to its end, then cross the main road into Pool Bank car park.



**Start:** Wildboarclough (GR SJ 982685)

**Finish:** Bollington (GR SJ 937778)

**OS map:** OL 24 Peak District – White Peak Area

**Distance:** 8.5 miles/13.7km **Ascent:** 1,532ft/467m

[www.friendsofthepeak.org.uk/boundary-walk](http://www.friendsofthepeak.org.uk/boundary-walk)