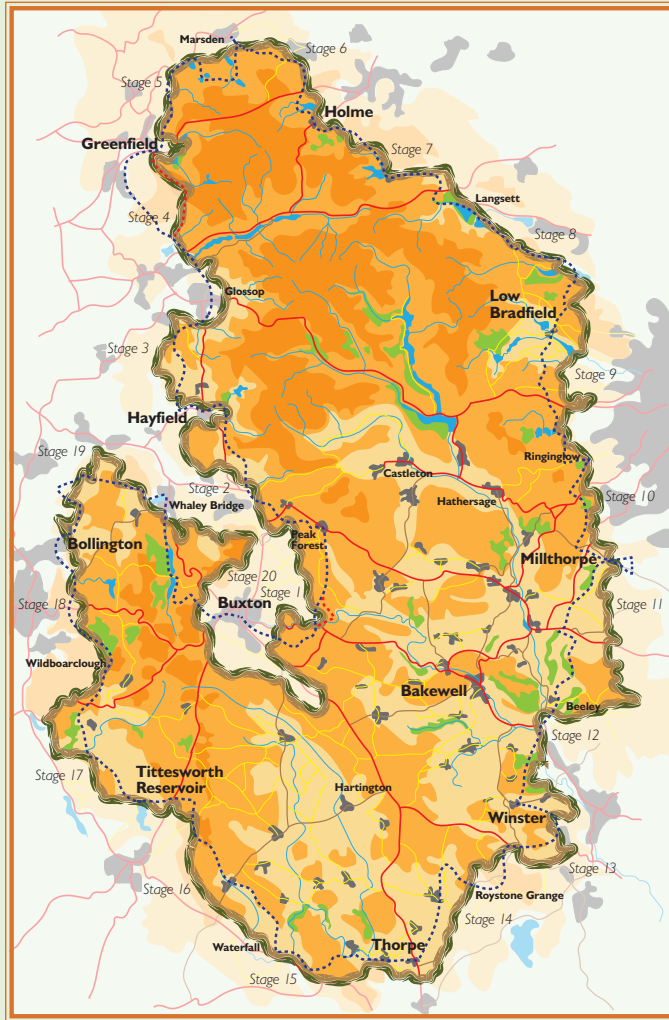


Peak District Boundary Walk



200 miles around the edge of the national park



Stage 17

Tittesworth Reservoir to Wildboarclough

1 Leave the visitor centre by walking down driveway to the road, and turn left along the road to cross the bridge over the end of the reservoir. Follow the road through Meerbrook and past the Lazy Trout pub and St Matthews Church. Go through Broad Lee Farm to a stile and path beyond, initially with a hedgerow on the left. Cross several fields until you reach a track.

2 Cross the track and continue forwards, across a stream, then go left at a crossroads of tracks towards Lower Wetwood Farm. Before the farm buildings take a waymarked footpath signposted Oldhay Top. About 50m after the last farm building go up a steep field, take the waymarked path through the hedgerow and cross the stream. Via a stile cross a footbridge, then head uphill towards the farm buildings at Old Hay. There is no path but there are footpath signs. Go through two more stiles to reach the farm track.

3 Turn left on the waymarked track uphill and then right (at the driveway entrance to New Zealand). Follow the road from New Zealand until it goes sharply left. Take the footpath on the right by a gate. Cross the stile by the gate on to a wide stony path, quite overgrown in places, to Gun End Farm and a road.

4 Turn left on to the road for about 500m. (Walk in single file on this road, as there is no pavement and cars travel quite fast round the bend.) Where the road curves sharply to the left, take the farm track on the right signposted Hawksley Farm.

5 After 100m turn right on a track downhill until you reach Hollin Hall. Just before the entrance to the hall take a path on the left. Go over a stile and follow the re-directed path around Hollin Hall to rejoin the track and go immediately right, over a stile and across a field, down to Gig Hall. At the bottom of steep steps turn right on to a grassed lawn and across a metal bridge.

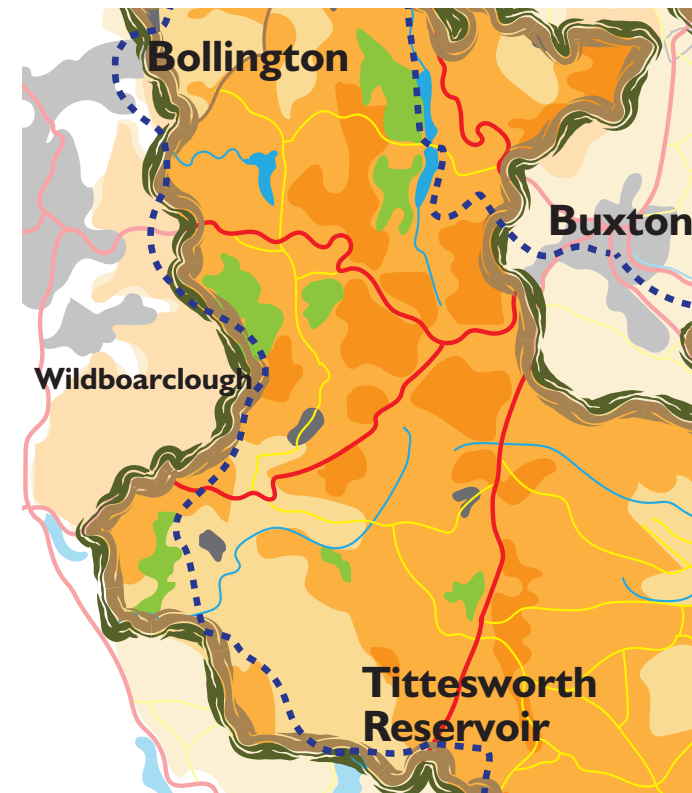
6 Follow the signposted footpath by the fence to go round Whitelee Farm, reaching a stile and a track outside the farm entrance. Turn left and follow this to a gate, then go over a stile and two fields to meet the signposted Gritstone Trail. Turn right, then at the next junction bear slightly left and head towards Nettlebeds Farm.

7 Just short of Nettlebeds Farm turn left at a path junction and steeply down to a signpost. Turn right to reach a wooden footbridge. Cross this and follow the valley, crossing a further footbridge and stiles. At Lower Greasley Farm bear right and uphill out of the wooded valley.

8 At a farm driveway turn right and follow the stony track up to the road at the entrance to Bennetts Hill Farm. Turn left and follow the road up to a junction. Cross the road (Barlow Hill) and stile, continue on the indistinct route across fields and gently downhill to the left edge of a wood, then up to the Wild Boar Inn on the A54 road.

9 Cross the stile to the right of the pub and over a field with more stiles towards Hammerton Knowl Farm, keeping the large mound of Hammerton Knowl on the left. Pick up the vehicle track and head left for Hammerton Knowl Farm. Turn right and go over the stile, through a gate and follow the driveway downhill to meet an unclassified tarmac road.

10 Follow this undulating road for 2km along the Clough Brook Valley to the Crag Inn near Wildboarclough. Stay on the right side of the road not only for safety reasons, but also for good views of Clough Brook as you walk in.



Start: Tittesworth Reservoir (GR SJ 993601)

Finish: Wildboarclough (GR SJ 982685)

OS map: OL 24 Peak District – White Peak Area

Distance: 10.1 miles/16.2km **Ascent:** 1,174ft/358m

www.friendsofthepeak.org.uk/boundary-walk