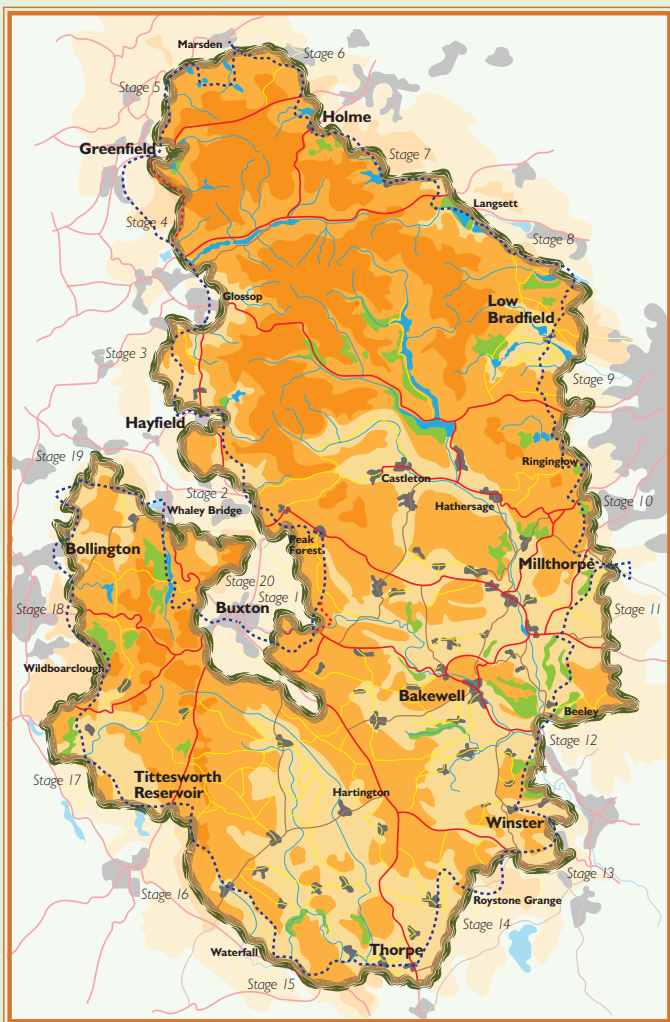


Peak District Boundary Walk



200 miles around the edge of the national park



Stage 15

Thorpe to Waterfall

1 From the small car park on the Thorpe-Ilam road, cross the road and walk along Digmire Lane until you reach St Leonard's Church. From here continue along the lane, bearing right and after about 250m go through a gate where the lane becomes a track. Turn right after Coldwall Bridge (part of the old Turnpike route to Cheadle and The Potteries) on the Limestone Way.

2 Cross the bridge (from Derbyshire into Staffordshire) and turn right on the footpath. Contour above the River Dove on your right, eventually dropping to the riverside. Follow the riverside path to reach the bridge at Ilam.

3 Cross the bridge and go past the monument. Continue in front of the row of cottages to enter the grounds of Ilam Hall via a white metal gate to the left of the main entrance. Follow the path past the church to the hall (well worth exploring). Turn left in front of the hall, cross the grass, descend steps and turn right. Follow the path behind the hall (known as Paradise Walk) with the river on your left for 800m, then go through the gate and left over the footbridge.

4 Cross two fields, heading for a gate stile in the wall at the tree line. Go straight up the steep hillside and near the top bear left to the wall ahead and follow it left to a gate. Continue with the wall on your right until you reach a corner in the wall, turn right and follow it to the entrance of Upper Musden Farm.

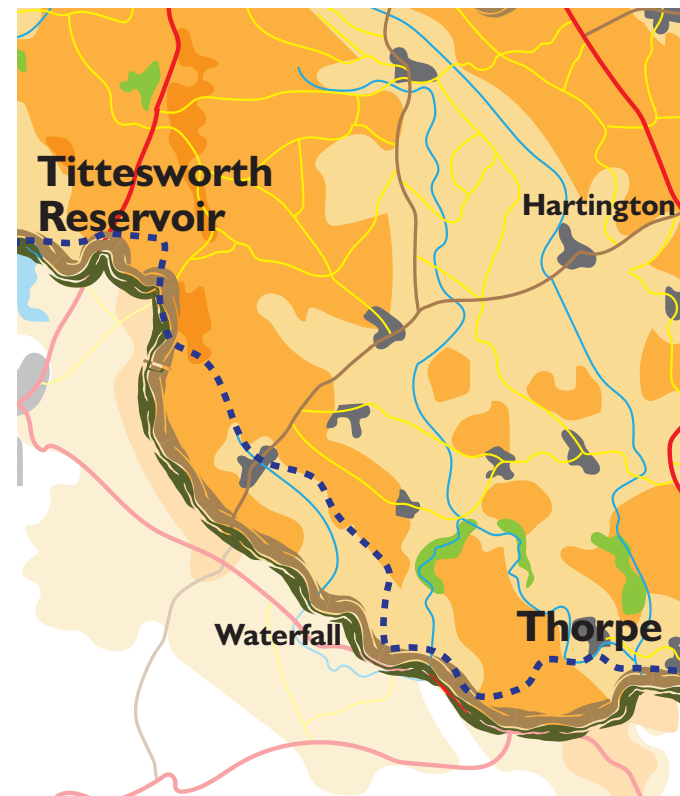
5 Continue ahead with the farm boundary on your right, and at its end go through a gateway and turn left to follow a footpath alongside the wall uphill. Beyond the next stile go diagonally right over the flank of Musden Low with lovely views up the Manifold valley to distant Axe Edge.

6 In the direction of the cement works (the tall outline of the buildings is a useful directional guide) cross Musden Low, crossing a stile and taking the path which leads directly to Fieldhead Farm to the farm gate in the corner. Here turn right, alongside the wall to reach a gate in the corner. Turn left on to a lane and after 100m take the gate on the right (just past Fieldhead Farm) and through fields to a minor road.

7 Turn right on to the road and go over the crossroads to reach the village of Calton. Follow the road into the quiet village. Turn right, through the gate marked Manor Farm onto a grassy track. Then, after going through the small black gate, turn right, following signs for the Manifold Valley track which will take you through another metal gate. Follow the path as it zig-zags diagonally down the steep slope to reach the Manifold Track in the valley bottom.

8 Turn left on the track (the trackbed of the old Leek and Manifold Light Railway) and continue to the main A523 road. Turn right towards Waterhouses, cross the busy road with great care, and follow the cycle path which rises away from the road to the car park.

9 Go through the car park and turn right on the minor road and continue to the junction with the A523, with Ye Olde Crown Hotel on the corner. Cross the main road, turn left and after 100m, opposite Bridge House, go through a gate stile on the right into a field. Follow the path northwards through a succession of stiles and fields, rising steadily to meet Rochester Lane. Turn left and continue on this quiet road. Follow the lane for about 600m (ignoring two junctions going off to the right) to reach the hamlet of Waterfall by a phone box.



Start: Thorpe (GR SK 155505)

Finish: Waterfall (GR SK 080515)

OS map: OL 24 Peak District – White Peak Area

Distance: 8 miles/12.9km **Ascent:** 1,086ft/331m

www.friendsofthepeak.org.uk/boundary-walk