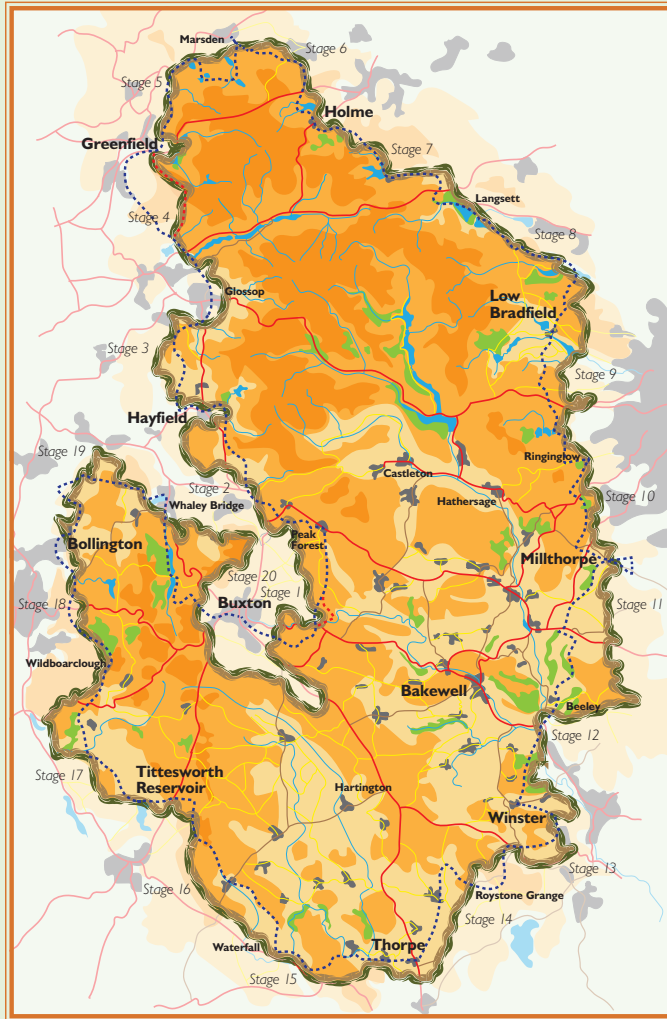


# Peak District Boundary Walk



200 miles around the edge of the national park



## Stage 14

## Roystone Grange to Thorpe

**1** Walk down the lane from Roystone Grange farm past the pump house towards Ballidon. Go on past the huge limestone quarries of Ballidon and Hoe Grange. Where you join a road at a hairpin bend, take the right fork downhill and continue past quarry buildings and roads on your right.

**2** At Ballidon Quarry's main entrance, by the roundabout with a small quarry wagon on it, turn right onto a tarmac footpath going slightly uphill behind a metal railing, towards the quarry's reception and offices. Turn left onto a path through trees and into a field. Go up the field's right hand edge and through the stile in the top right hand corner. Continue uphill with a fence on your right. At the end of the fence keep straight on to a stone wall corner and go through the stile. Go diagonally across the field to a tall wooden footpath sign, and through the stile onto a road at a T-junction.

**3** Cross the road and take the narrow tree-lined Monsdale Lane directly ahead, past a stone barn on the left. Follow it down into the attractive village of Parwich.

**4** Where the road joins from the village on the right, go ahead and down to a T-junction. Go right, cross the road, and take the footpath left, parallel to the road to cross a footbridge and gate. Continue with a small stream on your left, go through another gate and ahead to a stile. Beyond this turn right along a track and where it finishes continue on a footpath between hedges to a gate. Cross two fields, keeping left except to avoid boggy patches, and go through another gate and the lower end of Sitterlow Farm yard.

**5** Beyond the farm the gated track curves right. Fork left across the field to a gate in the far corner. Continue ahead to a signpost and go through the gate behind it. In the far right corner ahead, cross the footbridge over the Bletch Brook.

**6** Now go uphill to the right of two trees and to a small gate in a fence, with Gorsehill Farm to the left. Go up the hill and down the other side to a stile in the middle of the hedge. Follow the path through fairly new woodland to a stile in the top right hand corner, cross another field and via a gate go diagonally left across the minor road to the end of Lea Cottage Farm track and down through the farmyard.

**7** Approaching Lea Hall, go right up the track to Woodeaves and Fenny Bentley, then just after the second cattle grid take the left fork and continue on the track before descending right to a gate stile at the bottom right hand corner of Cloughriddins wood (crossing the grass to a gate into the wood). Go through to another gate and cross the stream. Go half left uphill through fields, then drop down to a gate and a footbridge across another stream.

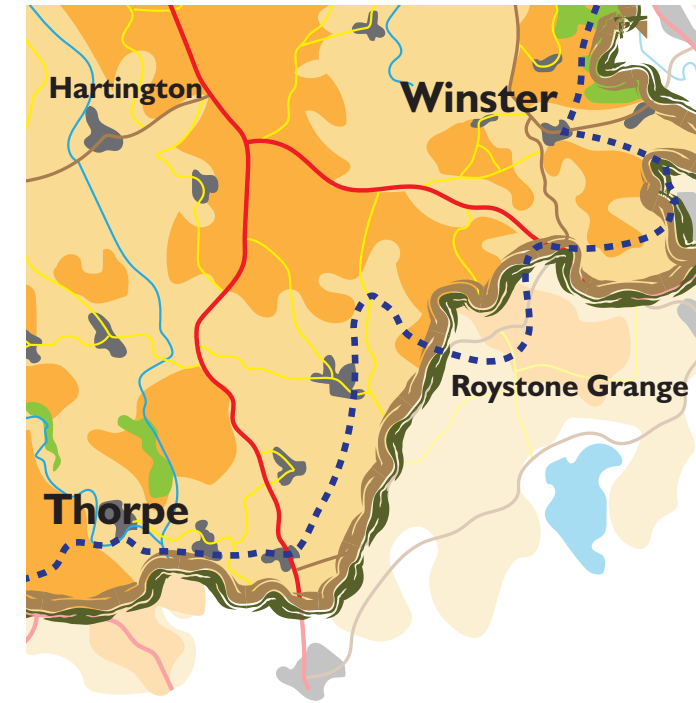
**8** Slant left to go through the farmyard of Woodeaves Farm and then walk down the farm road. Just before the end of the second field take the signposted footpath right to a small gate (up to the right). About 120m on go left, through the wall, and cross the stile to the left of Lees Farm. Cross the farm track and the next two fields. Cross the stream then keep near the right of the field, and go through the metal gateway into the field ahead.

**9** Follow the hedge on your left, then aim for the spire of Fenny Bentley church. To the left of the nearest buildings, join a track which leads down to the A515 at the Old School.

**10** Cross the A515, then turn right and go through St Edmunds churchyard. On the far side turn left along the lane and after the last house turn right at a narrow metal gate up a footpath. Continue across several sheep pastures, cross Wash Brook via a footbridge to climb up to the Tissington Trail.

**11** Go right on the trail until the former Thorpe station, which has a car park and picnic tables but no other facilities. Leave it along the road at the far end, joining another road (Narlow Lane) at a corner. Go ahead past a car park to the Old Dog pub.

**12** Take the road to the right of the pub and all the way down to the Peveril of the Peak Hotel. At the hotel gateway go right at the finger post and follow the path through the hotel grounds, then a small field. At the stile turn left and along the wall at the rear of the hotel, keeping to the fence until you reach a stony track at the wall corner. Turn left on this to reach the car park and toilets.



**Start:** Roystone Grange (GR SK 200566)

**Finish:** Thorpe (GR SK 155505)

**OS map:** OL 24 Peak District – White Peak Area

**Distance:** 7.7 miles/12.4km **Ascent:** 567ft/173m

[www.friendsofthepeak.org.uk/boundary-walk](http://www.friendsofthepeak.org.uk/boundary-walk)