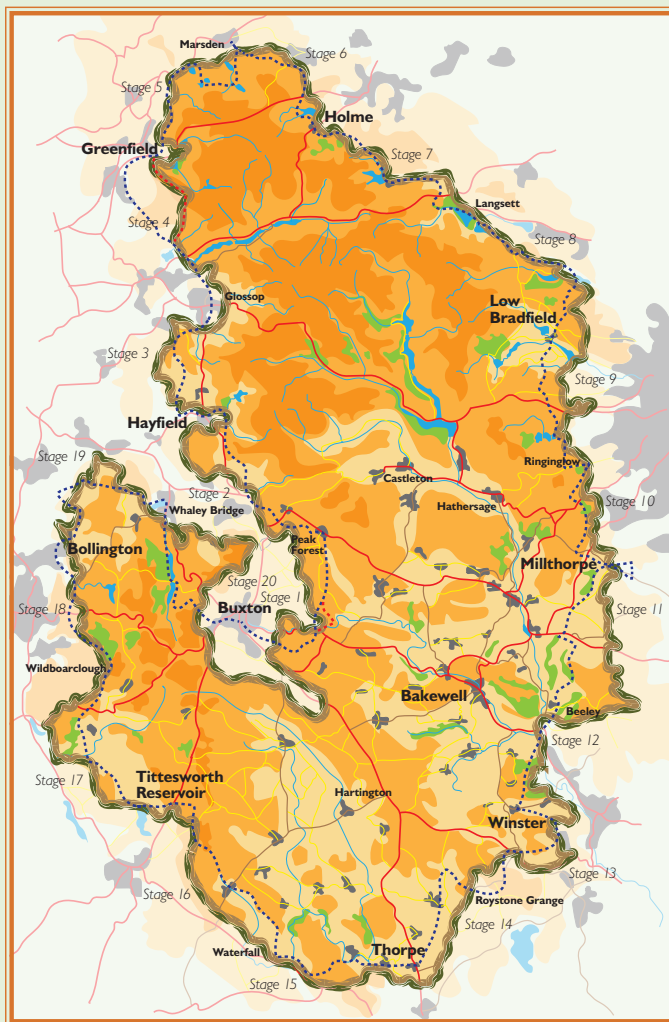


Peak District Boundary Walk



200 miles around the edge of the national park



Stage 13 Winster to Roystone Grange

1 From Winster Market Hall go up East Bank road to an easily-missed footpath immediately beyond the Old Bowling Green pub. Turn left in front of a cottage, along a tarmac lane and go through the stile behind a small bungalow (East View) on the right. Head up diagonally left through fields, eventually joining a path above fields hummocky from old lead mine working. Keep going up and at a footpath sign beyond a marooned squeeze stile join the Limestone Way.

2 Pass through the next field, below Luntor Rocks, and go through the gate in the top right hand corner. Go through a stile/gate in the wall on your right, then continue with the wall on your left. Continue through fields until the path bends right and up to cross a stile. Go across a field corner and three more fields, then diagonally through a long field to reach Bonsall Lane.

3 Turn left along the road and take the footpath on the right, signposted the Limestone Way. Follow it diagonally across fields and over broken-down walls, through a gate onto a lane. Go left and then immediately right at its junction with Blakemere Lane.

4 After 30m take the gate on the left and go diagonally right to a stile. Go left and then, at a path junction, right across several fields. Beyond a stone barn go through the stile in the far right hand corner. Ignore the Limestone Way's obvious route ahead towards a house and go further left (allotments on your left) to the gate stile in the far left corner of the field. Continue down the next, go through the left wall stile, and on beside the wall to a gate in the corner by a small copse and down to a road.

5 Go right along the road, bending left downhill past Abel Lane and into the centre of Bonsall. Beyond the splendid market cross go down Yeoman Street to the junction with The Dale on the right, by the Fountain Tearooms.

6 Take the walled footpath opposite the tearooms and go uphill where, at the top, you turn right in front of the gap in the wall ahead and go through the gate in the corner, under trees. After a gateway, go diagonally right to cross more fields under power lines to a stile with a marker post. Take the path across small fields to a road.

7 Go left along the road, down past Slaley Farm, then up right through the hamlet of Slaley. After this the road bends right and left. Take the second footpath on the right, going diagonally ahead to a gated stile. Cross more fields to a 5-way path junction at a stile, then beyond go diagonally left across the first of several rakes (narrow mined gullies). Take a left fork on a path past old mine workings that is ablaze with wild flowers in season. Go left round a large hole to a double gate.

8 Go diagonally left and then right of a restored barn to a gate in the wall, crossing the next field to Bonsallmoor Lane. Cross the road and follow the Limestone Way along the left hand edge of several fields past Leys Farm. At the end of the field carry straight on along the right hand edge, with Whitecliffe Farm to the left. In the dip of the next field, go through the stile/gate on the right, then left uphill with the fence on your left. Where the fence ends, keep straight on uphill to another stile and the path to a road.

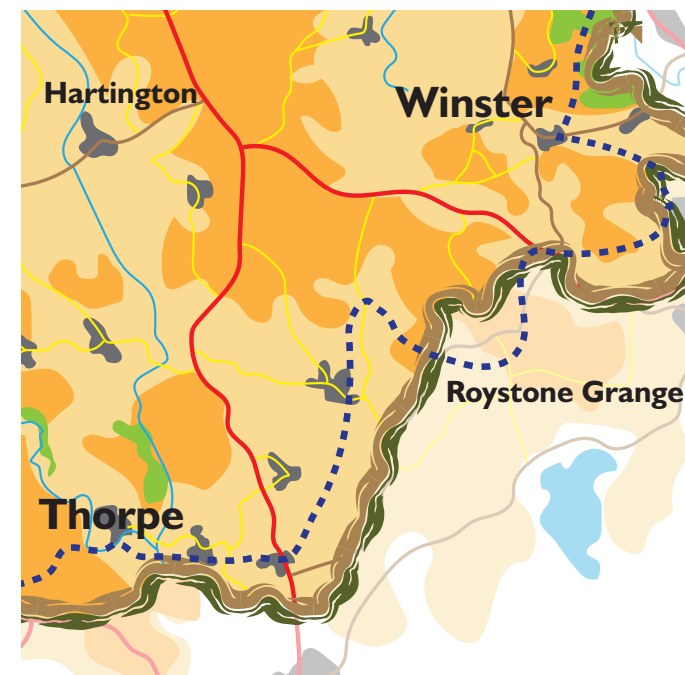
9 Go right along the road, through the hamlet of Ible and downhill to a road junction. Turn sharp left along to Grangemill. Cross the A5012,

take the bridleway signposted Brassington and the Limestone Way, and follow it across three fields up to a gateway in the far corner.

10 Cross four more fields on a well-marked path to stiles which lead onto the High Peak Trail. Go right along the trail for over 3.2km of easy walking (also popular with cyclists) until a low hill topped by a clump of trees called Minninglow.

11 As you reach a small wood on the left of the trail, almost opposite Minninglow, go through a gate on the right and down to a path that crosses beneath the trail. Beyond the bridge, follow the track down, ignoring the gate in the far corner and instead go through the gateway to its right. Further down the next field take the wall step stile on the left and go downhill on a track. Ahead to the left is a 19th-century pump house and to the right Roystone Grange farm. Go through a gate squeeze, half left across a small field, and through the stile onto a lane.

Due to lack of public transport and parking facilities at Roystone Grange, walkers may wish to deviate from the route at Longcliffe, where the High Peak Trail crosses the road, and walk about a mile to Brassington where there are parking facilities and refreshments at the pub (closed on Mon). Section 14 can then be resumed by walking from Brassington back to the route.



Start: Winster (GR SK 242606)

Finish: Roystone Grange (GR SK 200566)

OS map: OL 24 Peak District – White Peak Area

Distance: 10 miles/16km **Ascent:** 1,083ft/330m

www.friendsofthepeak.org.uk/boundary-walk