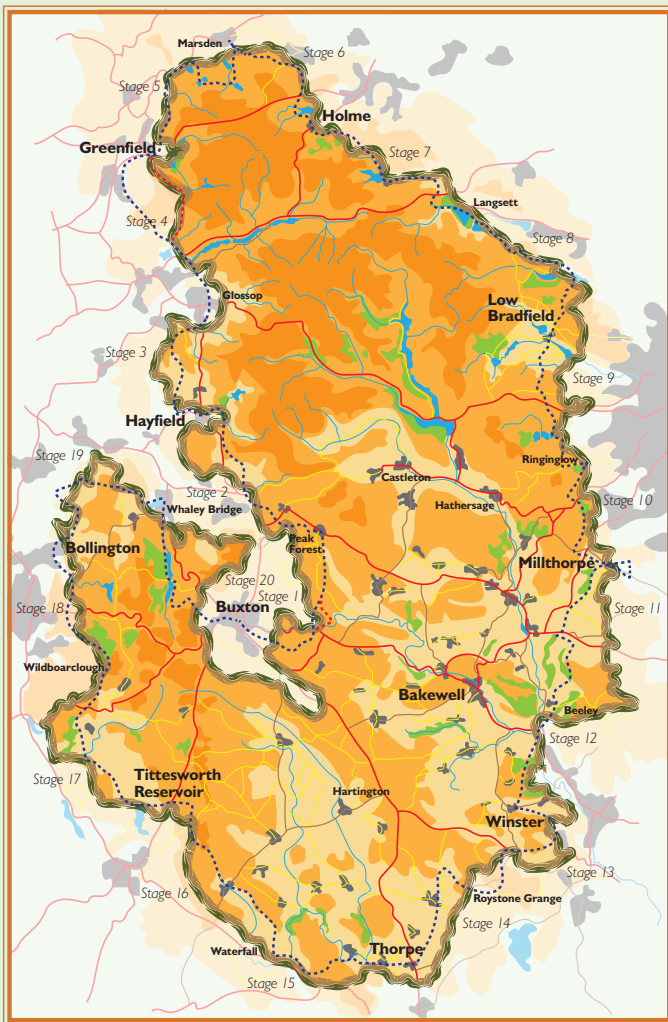


Peak District Boundary Walk



200 miles around the edge of the national park



Stage 1

Buxton to Peak Forest

1 From outside Buxton Town Hall in the market place head south down the High Street, go across the 5-way traffic light junction towards Ashbourne and take the second turning on the left into Byron Street. Continue to the end (crossing Kents Bank Road) and follow a footpath sign on the right over a railway bridge.

2 Walk ahead through allotments as far as a gate, then continue ahead next to a fence on the right, with Ashwood viaduct on the right. Head towards a double telegraph pole, go through a gate/gap in the wall and then turn immediately right and head steeply downhill to the gate and steep steps to the road. Cross the road and walk ahead through Lime Tree Caravan Park (middle road), uphill past some farm buildings and through a farmyard before bearing left up the hill on a grassy lane. Pass through a gate and continue left up the hill to the hamlet of Staden.

3 Go through Staden following the footpath signs. Cross a stile on the right and follow the track over stiles to the back of some farm buildings, finally emerging on the road at Cowdale. Turn right on to the road, for a stile on the left. Now walk across the field to a gate on the right, then continue through a further three gates to reach a road near to King Sterndale church.

4 Turn left on the road and take the Midshires Way through a gap in the wall on the right. Walk ahead through fields and into Deep Dale, bearing right for the steep zig zag path to the bottom of the dale. Cross the stile, turn left and follow the path through the dale. Go down steps and take the path on the left after the interpretation panel. With Topley Pike quarry now on your left, follow the fenced path to finally emerge on the busy A6.

5 Cross the road and walk through the car park along the vehicle track all the way to Blackwell Mill. Follow the path with the river on your left past the bike hire centre. Cross the bridge towards Blackwell Mill cottages and turn right.

6 Go along the trail by the river until the Pennine bridleway sign. Go left uphill on a zigzag route. Turn right at the top through Mosley Farm farmyard. Turn left on the road for 500m to the first public footpath on the right. Go through a narrow gate to your right, just before the path re-joins the tarmac, and cross two fields towards a gate leading into Flag Dale. Drop down a very steep stony path to Flag Dale and up a similar path on the other side. Cross two fields diagonally right through stiles to reach Hassop Farm, where you join the road into Wormhill.

7 Continue through Wormhill on the road to the crossroads. Turn right then, where the road bends sharply right, take the trail straight ahead and follow it down to Dale Head Farm on indistinct paths and into Hay Dale via a wall stile.

8 Continue to the end of the dale, over the stile and turn right onto the road. Take the footpath on the left just before the road starts to climb. Follow the footpath along Dam Dale, with the wall on your left over stiles and broken walls, until reaching the back of a farm with sheds to your left. Go through the gate and to the stile ahead. Turn left at the stile, signposted Dam Side, across a field as you contour around the hill to reach a small white house.

9 At the white house go through double gates, then at the signpost on the corner go left, over the right hand stile. Walk forward uphill to the

gate at the top on the left. Go through the gate and follow the wall on your right until you reach the road.

10 Turn right on the road and proceed past New House Farm until you get to a T-junction. Turn right and walk along the road to Peak Forest.

A stepping stones alternative

At the end of point 5, follow the path beside the river into Chee Dale and via stepping stones through the dramatic gorge. Continue along a sandy and wooded section, then at a footbridge turn left and double back up steeply through a small wooded ravine to reach the lane for Wormhill.



Start: Buxton Town Hall (GR SK 058733)

Finish: Peak Forest (GR SK 113793)

OS map: Explorer OL 24 The Peak District – White Peak Area

Distance: 12.4 miles/20km **Ascent:** 1,485ft/453m

www.friendsofthepeak.org.uk/boundary-walk